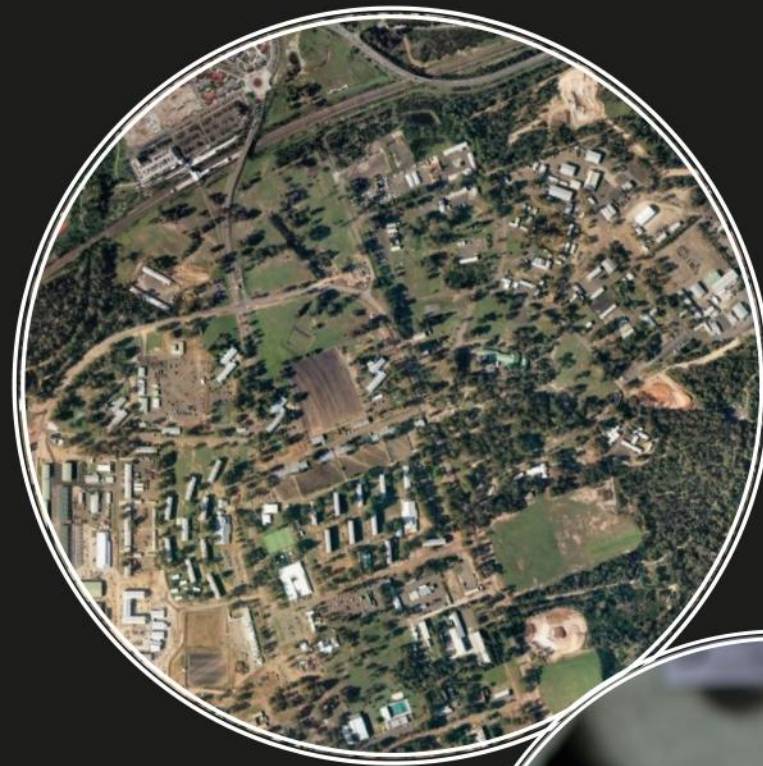


Pointlining rehabilitation of the Military Barracks, Holsworthy, NSW.



Our Message



"ITS PipeTech deliver cost effective, high quality, low risk solutions for all pipeline and culvert rehabilitation, extending the life of existing assets and infrastructure utilising environmentally responsible processes and methodologies".

Better Smarter Outcomes

Project Details



Industry: Stormwater

Project: Rehabilitation of Stormwater pipes at Holsworthy Military Barracks

ITS PipeTech was engaged to rectify defects within newly constructed stormwater network as part of the Holsworthy Army Barracks relocation project. Construction defects were identified in their new stormwater network and ITS were contracted to re-instate the stormwater assets back to full operation and functionality. The defects included circumferential and longitudinal cracking, chipped joints, and pinched sealing rings. Excavation and open trench rectification of the defects were deemed too costly, disruptive and time consuming which is why ITS' **Point-Lining** technology was chosen as an alternative rehabilitation process.

Point-Lining is a structural repair method of repair for sewer, stormwater and industrial pipelines with the capability to repair diameters ranging from 80mm up to 1000mm. This repair method is a time tested and highly regarded localised pipeline repair product for gravity pipelines. Point-Liners are suitable for the sealing of live connections, repair of cracks, fractures, fragmentation, leakage, broken and displaced joints, as well as the capping of disused junctions and more.

Point-Liners provide clients and asset owners with a cost effective, structural repair with a 50 year design life. The Holsworthy project was carried out within the Army barracks while normal operations of the precinct went uninterrupted. ITS complied with the client's specifications for inductions and acquisition of defense clearance to ensure the job was completed in an efficient and ethical manner.

The project was completed with no issues and John Holland were extremely pleased with the response time and results of the completed works.



CONTACTS

www.itspipetech.com.au

NSW and Head Office:

1/13 Stanton Road, Seven Hills NSW 2147

Postal Address:

PO Box 318 Seven Hills NSW 1730

Telephone: (02) 8603 2000

Fax: (02) 8603 2001

Email: enquiries@itspipetech.com.au

Queensland Office:

2/49 Links Ave, Eagle Farm QLD 4009

Postal Address: PO Box 173 Pinkenba QLD 4008

Telephone: (07) 3630 2333

Fax: (07) 3630 2111

Email: enquiries@itspipetech.com.au

WA Office:

20 Baretta Rd, Wangara WA 6065

Telephone: (08) 9408 1648

Fax: (08) 9408 0332

Email:

enquiries@itspipetech.com.au